

■ General Description

AME5903 is a fully integrated high efficiency synchronous step-down converter capable of delivering up to 3A of output current. It employs an adaptive COT control providing a fast transient response. It can operate over a wide input voltage range from 4V to 18V. AME5903 also provides UVLO, OCP, and OTP protection functions. It's available in the SOT-563 package.

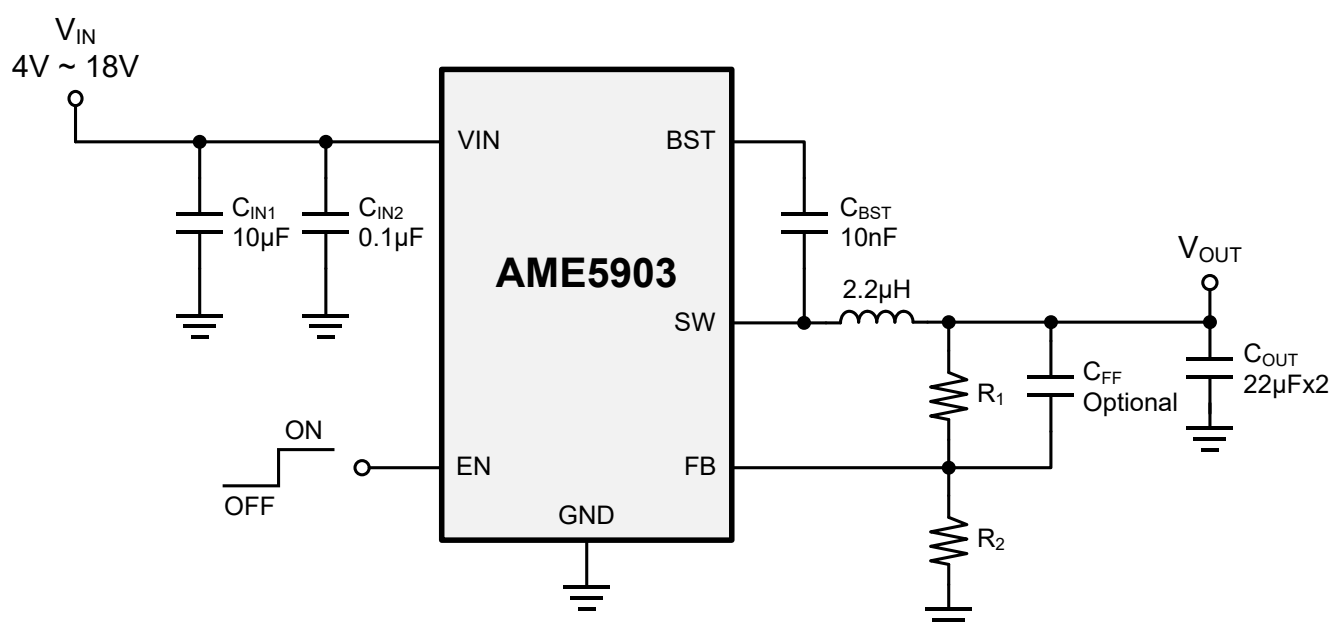
■ Features

- Input Voltage Range: 4V to 18V
- Output Voltage Range: 0.806V to 5.5V
- $\pm 2\%$, 0.806V Feedback Voltage Accuracy
- 3A Continuous Output Current
- 1.0MHz Switching Frequency
- Low $R_{DS(on)}$ Internal Switches (High/Low Side):
85m Ω / 35m Ω
- Internal Over Temperature Protection
- Internal Over Current Protection
- Internal Input Under-Voltage Lockout Protection
- RoHS, TSCA & HF Compliance

■ Application

- Networking Systems
- Personal Video Recorders
- Flat Panel Monitors
- Laptop Computer
- Table PC

■ Typical Application Schematic





www.ame.com.tw

E-mail: sales@ame.com.tw

Life Support Policy:

These products of AME, Inc. are not authorized for use as critical components in life-support devices or systems, without the express written approval of the president of AME, Inc.

AME, Inc. reserves the right to make changes in the circuitry and specifications of its devices and advises its customers to obtain the latest version of relevant information.

© AME, Inc. , July 2025

Document: C004-DS5903-A.01

**Corporate Headquarter
AME, Inc.**

8F-1, 12, WenHu St., Nei-Hu Dist.,

Taipei 114, Taiwan..

Tel: 886 2 2627-8687

Fax: 886 2 2659-2989