

■ General Description

AME5954 is a high efficiency 1.2MHz synchronous step-down DC/DC regulator capable of delivering up to 4A output current. It employs an adaptive COT control providing a fast transient response. It can operate over a wide input voltage range from 2.5V to 5.5V.

AME5954 also provides UVLO, OCP, OTP protection functions. It's available in the FCDFN-8G (2.1 x 1.6 x 0.55 mm) package.

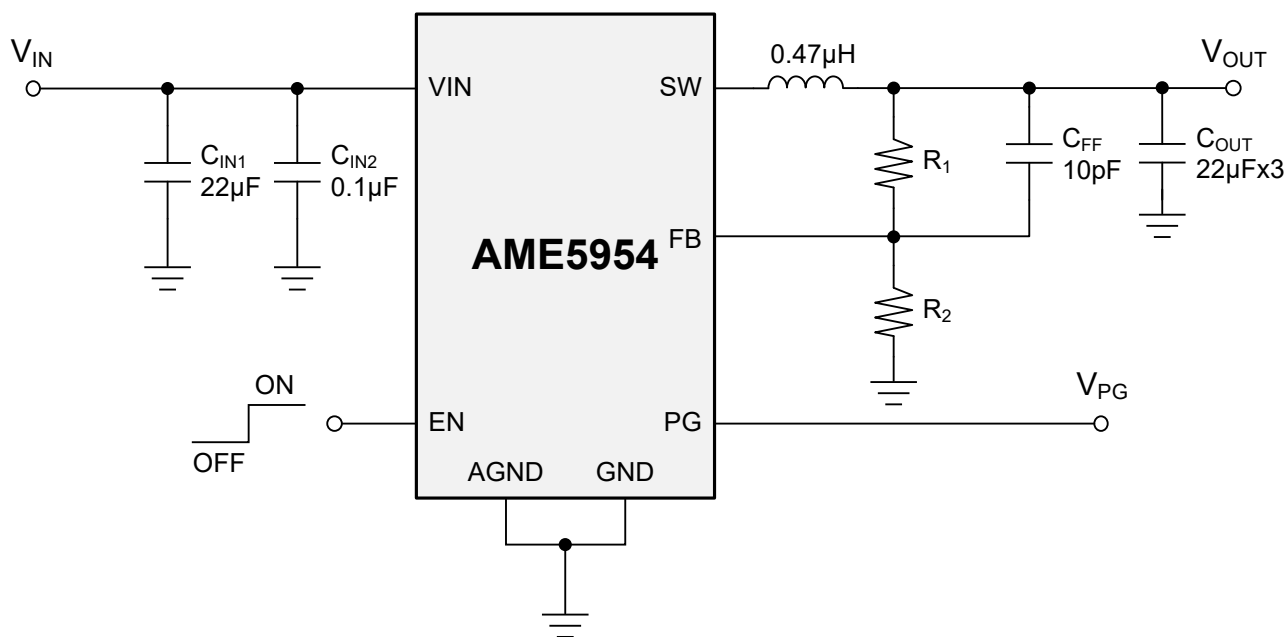
■ Application

- Networking Systems
- Flat Panel Monitors
- Laptop Computer
- Table PC

■ Features

- Input Voltage Range: 2.5V to 5.5V
- Up to 4A Max Output Current
- Adaptive COT Control
- Ultra-Fast Load Transient Response
- 1.2MHz Switching Frequency
- Forced PWM Mode
- $\pm 1\%$, 0.4V Feedback Voltage Accuracy
- Internal 1ms Soft-Start Time
- Hiccup Mode at Short Circuit Protection
- Internal Over Temperature Protection
- Internal Over Current Protection
- Internal Input Under-Voltage Lockout Protection
- Available in FCDFN-8G (2.1 x 1.6 x 0.55 mm) Package
- RoHS, TSCA & HF Compliance

■ Typical Application Schematic





www.ame.com.tw

E-mail: sales@ame.com.tw

Life Support Policy:

These products of AME, Inc. are not authorized for use as critical components in life-support devices or systems, without the express written approval of the president of AME, Inc.

AME, Inc. reserves the right to make changes in the circuitry and specifications of its devices and advises its customers to obtain the latest version of relevant information.

© AME, Inc. , December 2025

Document: C006-DS5954-B.01

**Corporate Headquarter
AME, Inc.**

8F-1, 12, WenHu St., Nei-Hu Dist.,

Taipei 114, Taiwan..

Tel: 886 2 2627-8687

Fax: 886 2 2659-2989